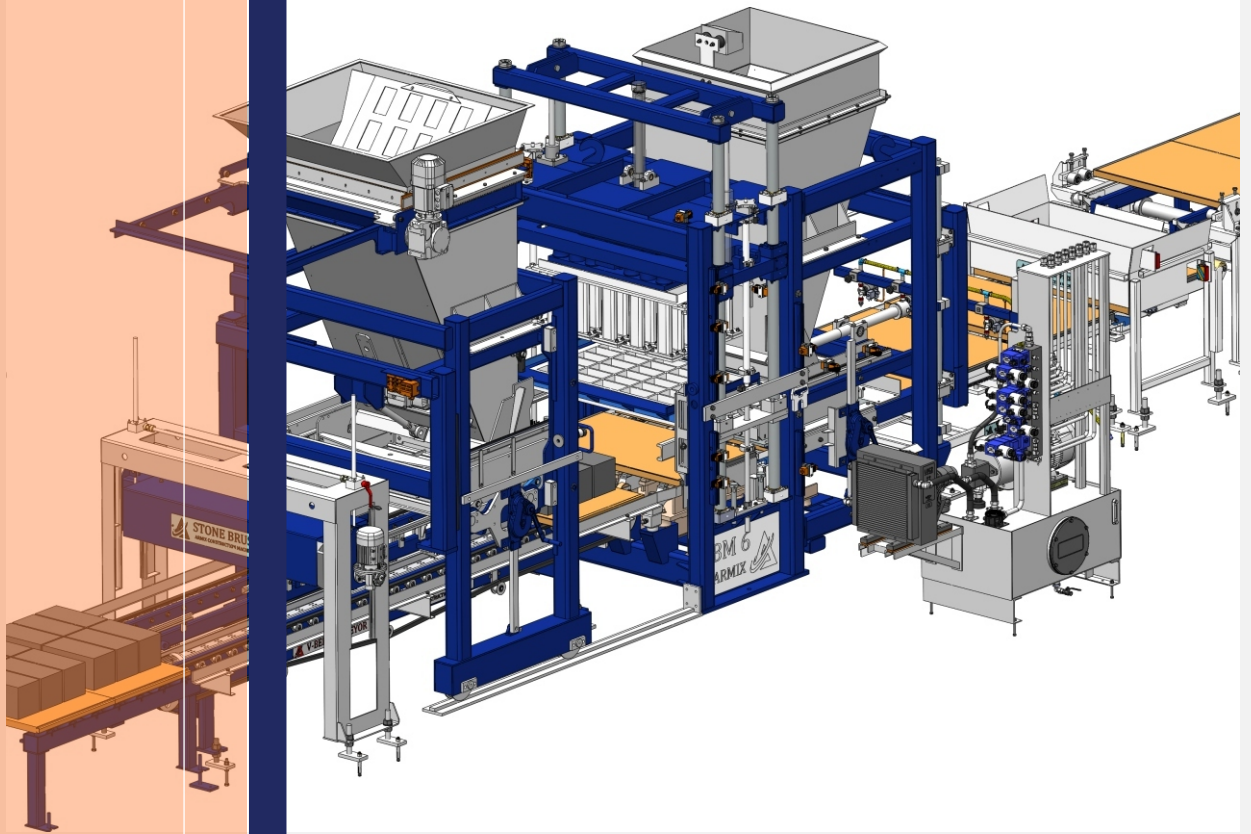




ARMIX

BM-6

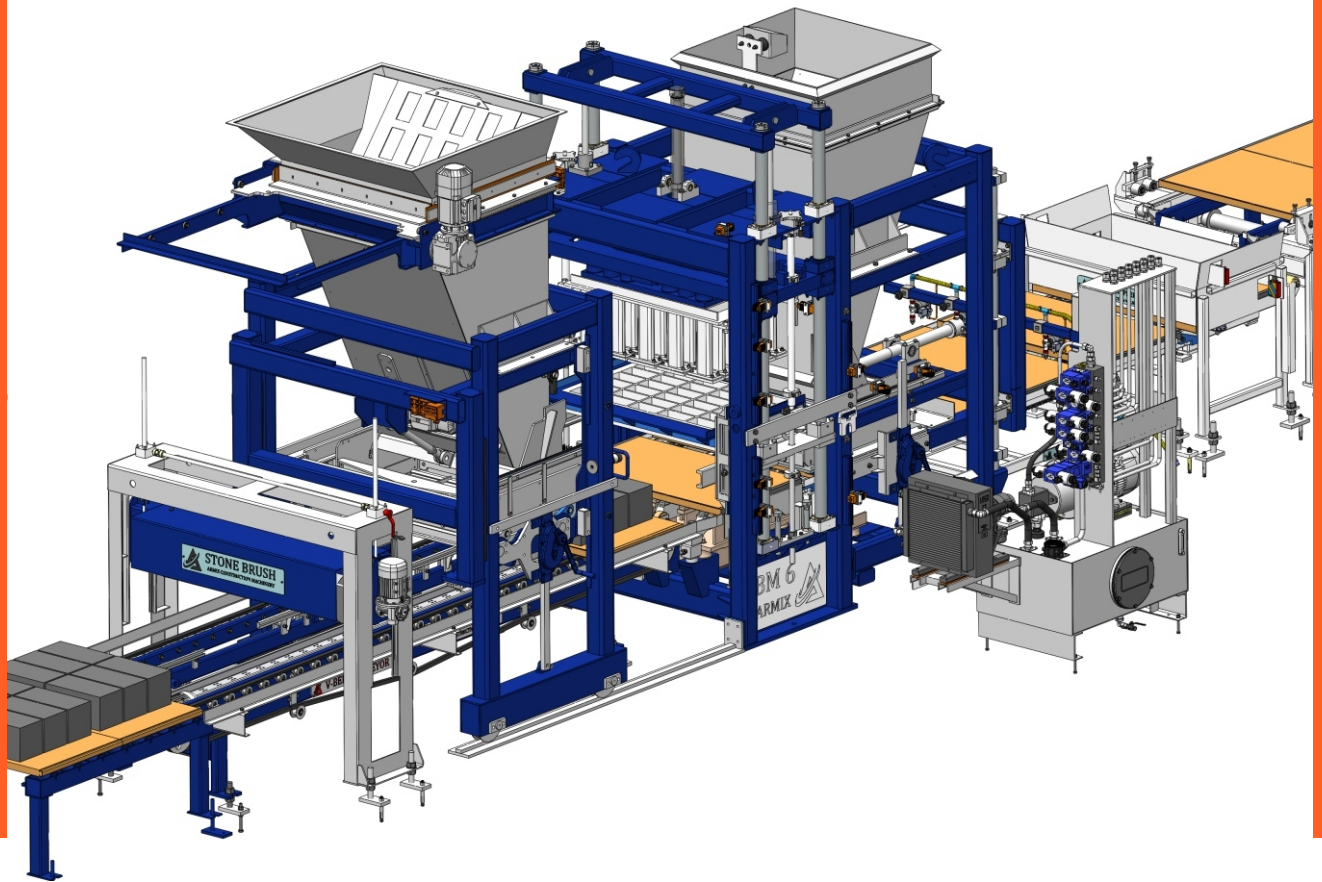


INNOVATION IS OUR
PASSION

www.armixmachinery.com

FORMERLY FOREST PRESS

Concrete Block Machine - 6



Machines of the BM 6 are equipped with the proven technology. The production area is available from 3 to 6 blocks per Cycle. The high quality results derived from advanced vibration technology and height control precision are now possible across a wide range of products, from 40mm pavers to 200 mm high wall units.

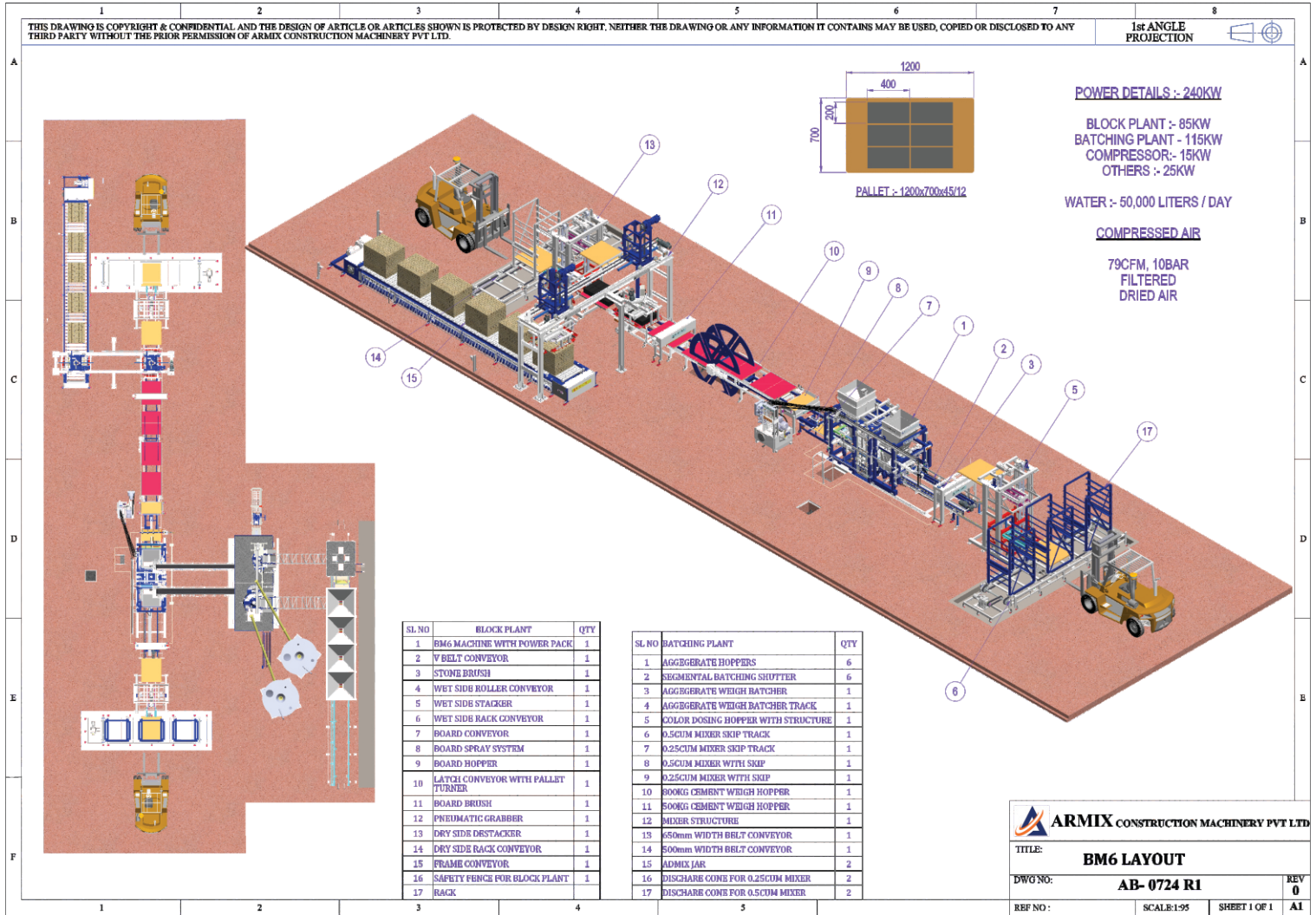
- Fully automatic mold change with height adjustment mechanism
- Designed to use existing foundation
- Suitable to use existing molds
- Operator controls with complete diagnostics
- The dimensional accuracy and high density for improved durability

Technical data*

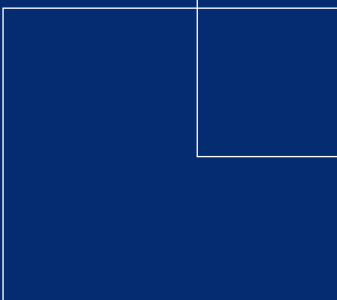
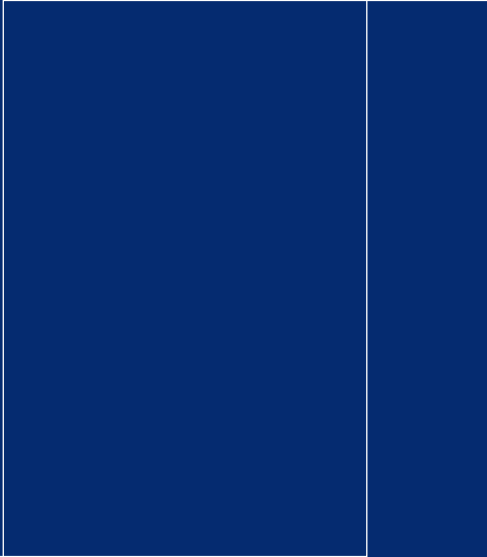
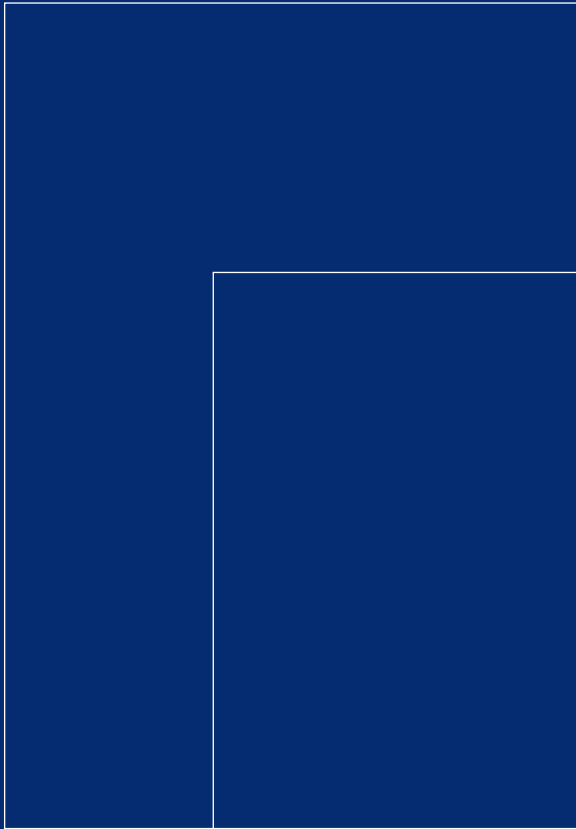
	BM 6
production board (mm)**	1200 x 700
production area (mm)**	1150 x 650
min. product height (mm)	25
max. product height (mm)	200
dead weight approx. (kg)	8000
cycle time (s)	18

*Production capacities are calculated on 85% basis and depend on machine configuration, used recipes, raw materials, pallet handling, mold characteristics as well as utilized production boards. Technical Data are subject to change. **other production board sizes available.

BM-6 FULL LAYOUT With Production Details



Features			Per Hour	No 10hrs@85%	Area sq m
Block	400 X 200 X 200	6	1020	10200	816
	400 X 200 X 150	8	1360	13600	816
	400 X 200 X 100	12	2040	20400	816
UNI paver	225 X 112.5	20	3400	34000	860
Rectangular	200 X 100	30	5100	51000	1020
Fly Ash Bricks	230 X 110 X 75	20	3400	34000	860



CONTACT US

Armix Construction Machinery Pvt Ltd



Ph No.: +91-99000-50600

Mob.: +91-99000-50611



info@armixmachinery.com

sales@armixmachinery.com



No 121/F, Bommasandra
Industrial Area, Bengaluru,
India 560099